

# What do you expect from a Wide-Band controller?

You purchased a wideband gauge!

**BENCH TEST BEFORE INSTALLING IT!**  
USE A RELIABLE 12V  
POWER > 5AMP

Stock (OEM) ECU or  
Aftermarket-ECU?

Stock (OEM)  
ECU

Aftermarket  
ECU



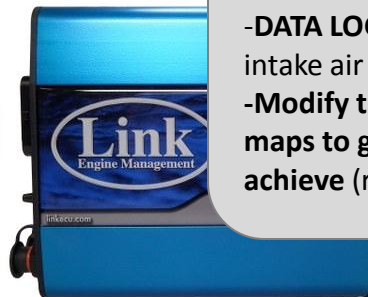
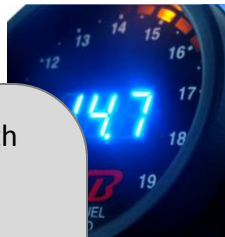
MegaSquirt, Link,  
Adaptronic, EcuTek,  
EFILive, HPTuners, ViPEC...

-KEEP original O2 sensor in place  
-WELD bung on exhaust for wideband sensor

-REPLACE the original O2 sensor  
with wideband sensor

-MONITOR AFR for Engine Health  
Check at cruising (*closed loop*)  
-Expect 1 sec fluctuations  
frequency due to stock (OEM) ECU  
(about 13-17AFR range)  
-At full throttle (*open loop*), the  
ECU does not use sensor info. Just  
tries to keep the engine around  
13AFR or lower pre-set AFR values.  
-LIMITED tuning options

-MONITOR AND FEED AFR to  
aftermarket ECU for tuning  
-DATA LOG with MAP, AFR, RPM and  
intake air temperature  
-Modify the engine readings / data  
maps to get the results you want to  
achieve (road tune or dyno tune)



A P S X

**WB**

WIDEBAND

[www.Wide-Band.com](http://www.Wide-Band.com)